

RUSK ZONE CORE PHOTOS



KL-21-523 138.15-140.41 m – 5.0 g/t gold, 336 g/t silver, 5.9% lead and 4.8% zinc over 2.26 m



KL-21-523 Detailed

RUSK ZONE CORE PHOTOS



KL-21-523 Detailed

RUSK ZONE CORE PHOTOS



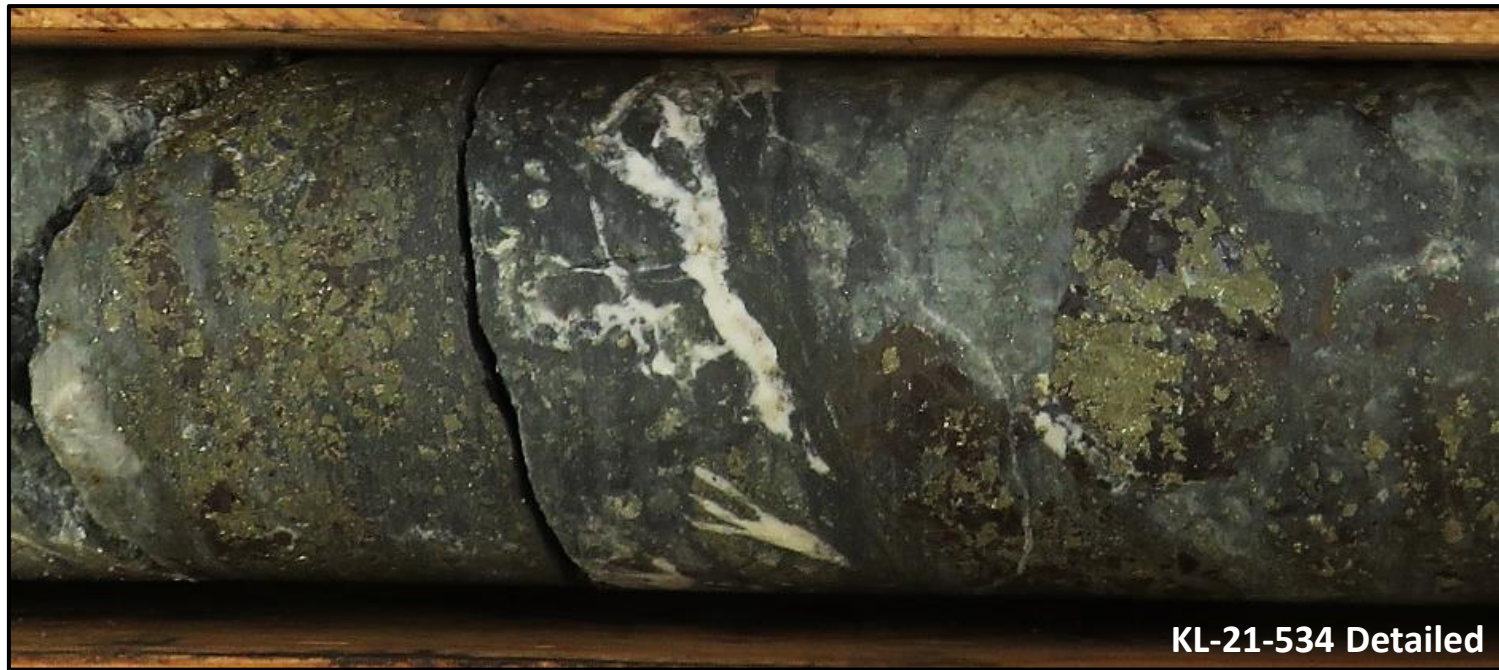
KL-21-528 108.47-113.16 m – 1.1 g/t gold and 128 g/t silver over 4.69 m

RUSK ZONE CORE PHOTOS

KL-21-528 Detailed 108.90m – 4.06 g/t gold and 99 g/t silver over 0.61 m

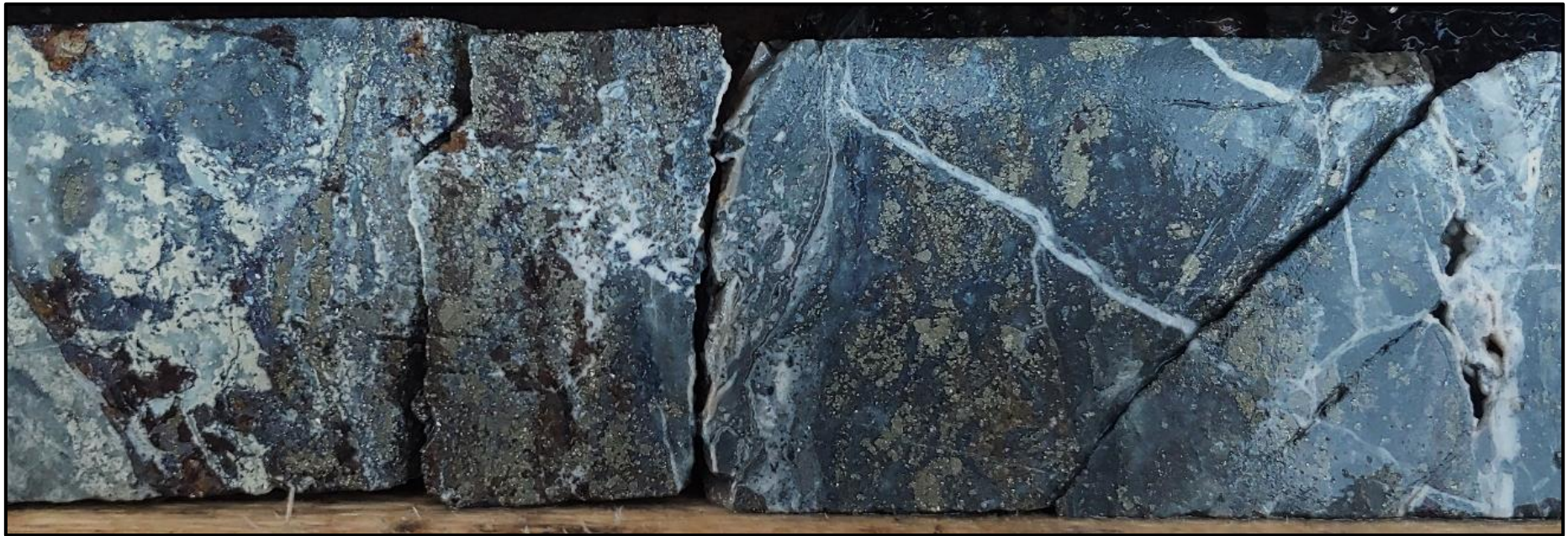


RUSK ZONE CORE PHOTOS



KL-21-534 Detailed

RUSK ZONE CORE PHOTOS



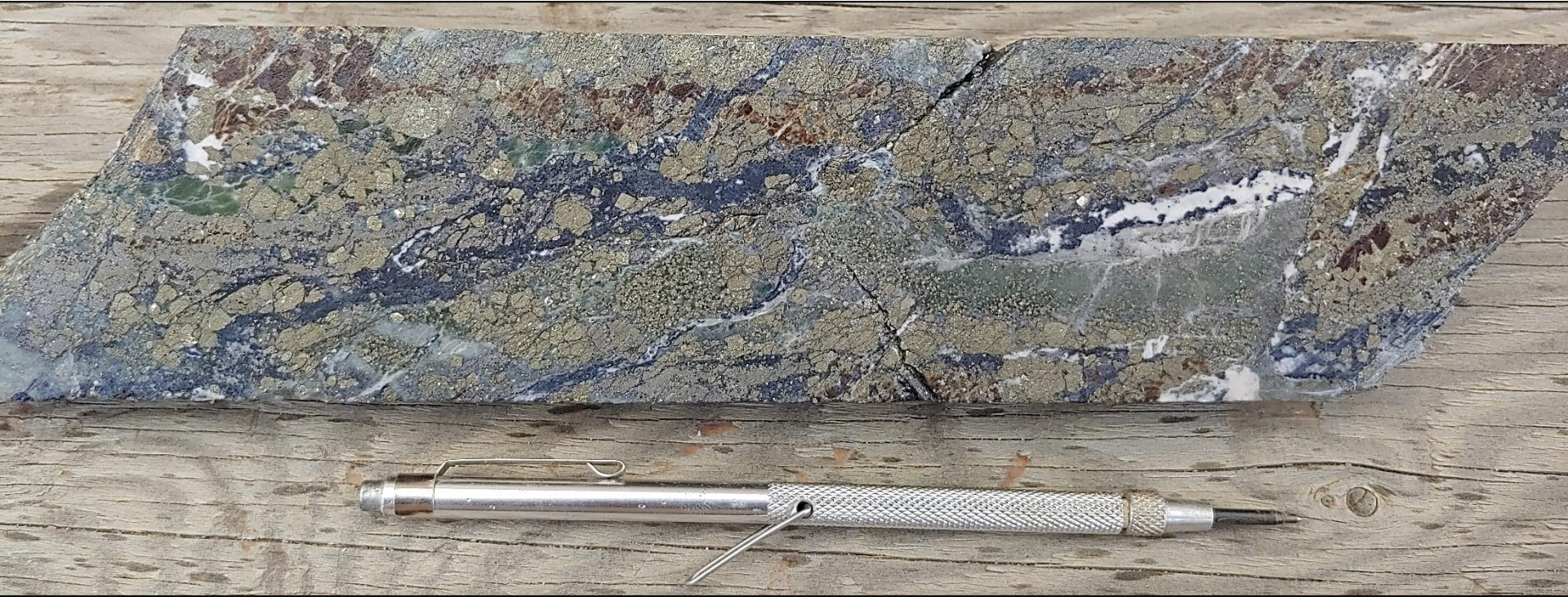
KL-21-534 Detailed

RUSK ZONE CORE PHOTOS



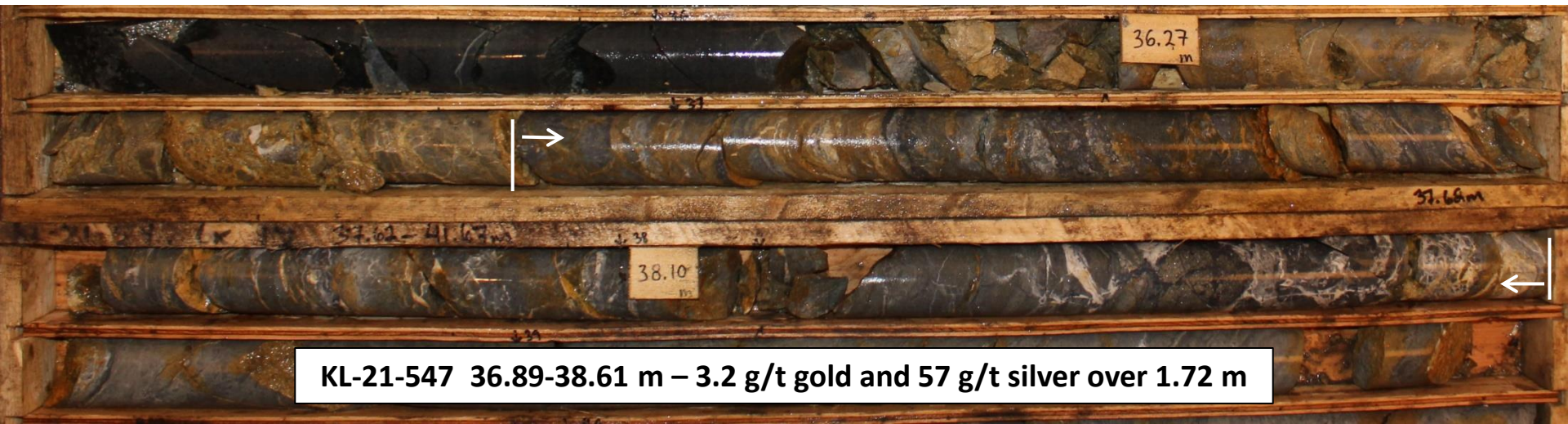
KL-21-542 136.10-144.00 m – 2.2 g/t gold, 43 g/t silver, 0.5% lead and 1.1% zinc over 7.90 m

RUSK ZONE CORE PHOTOS

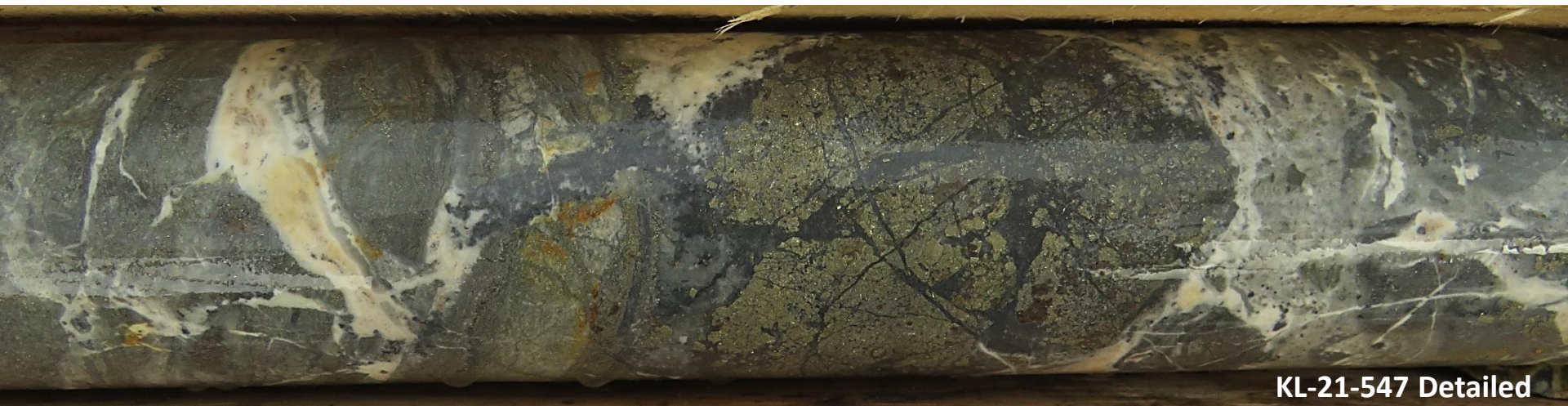


KL-21-542 Detailed @139 m 9.1 g/t gold, 177 g/t silver, 2.5% lead and 5.0% zinc over 0.91 m

RUSK ZONE CORE PHOTOS

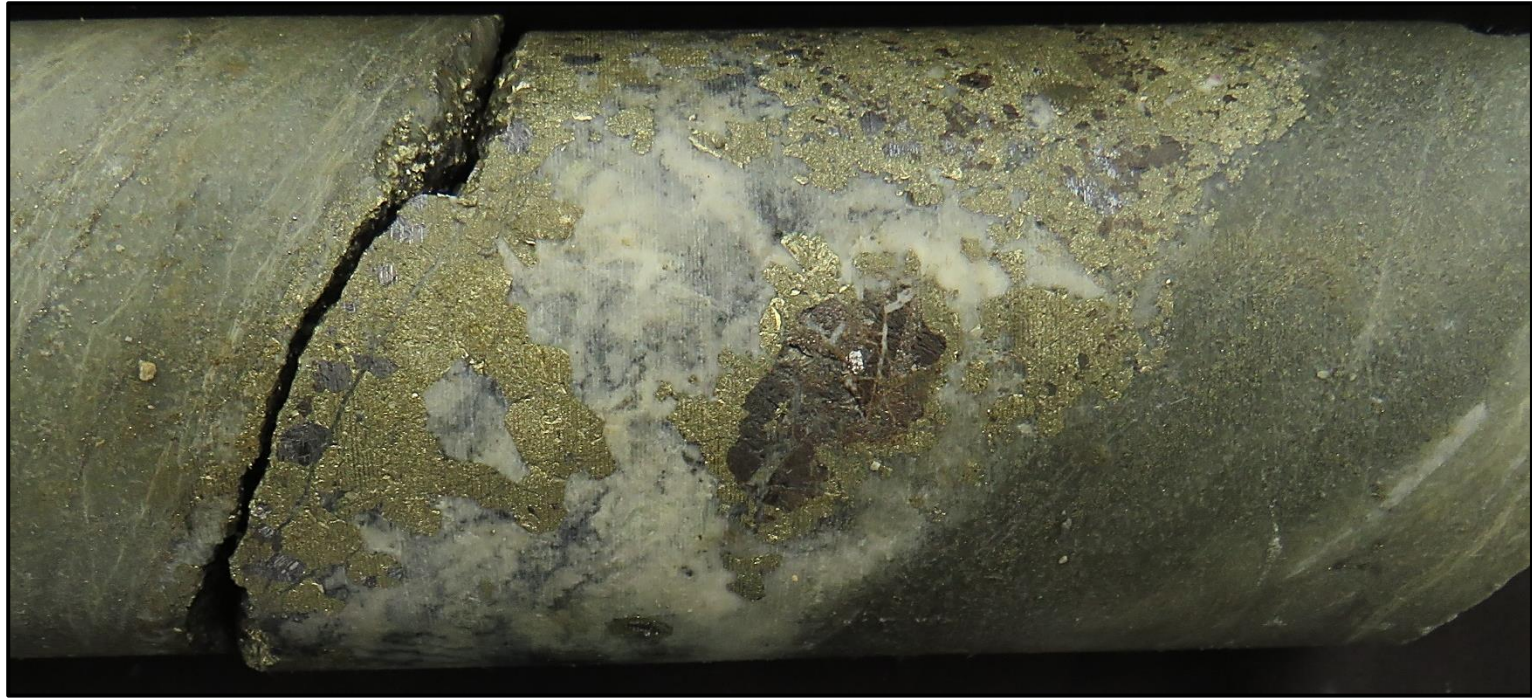


KL-21-547 36.89-38.61 m – 3.2 g/t gold and 57 g/t silver over 1.72 m

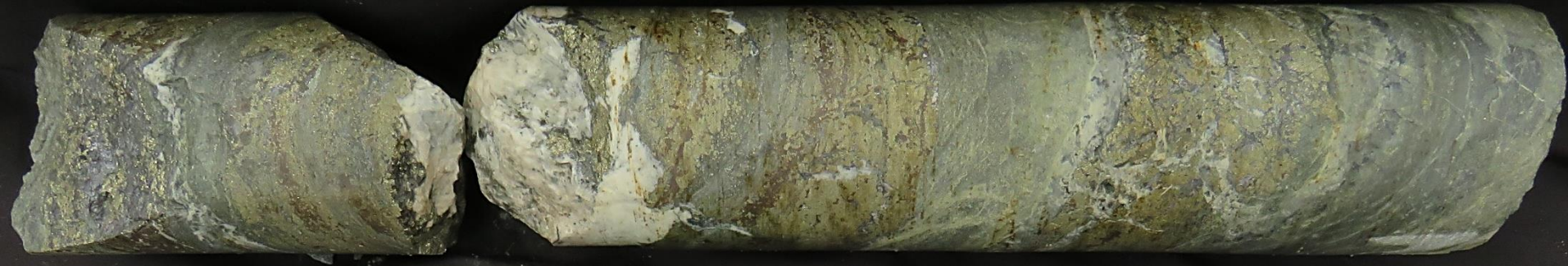


KL-21-547 Detailed

RUSK ZONE CORE PHOTOS



KL-21-558 Detailed 61.12 m – 2.17 g/t gold and 178 g/t silver over 0.50 m

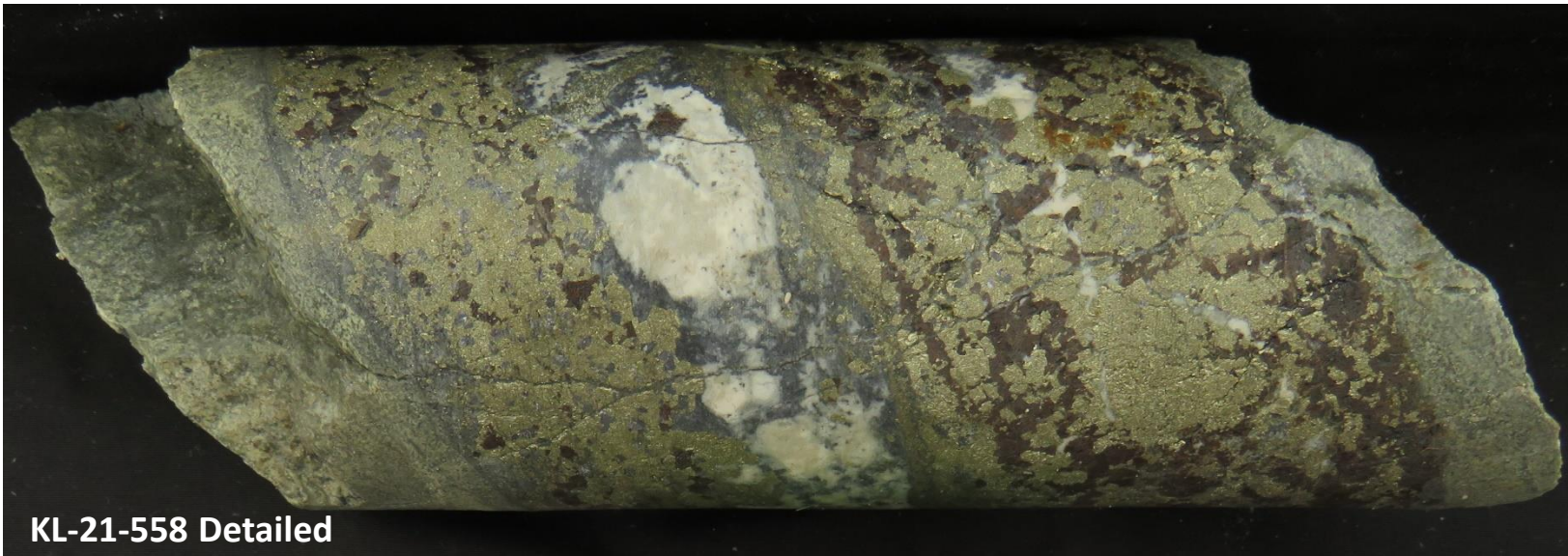


KL-21-558 Detailed 67.27 m – 9.4 g/t gold, 491 g/t silver, 3.6% lead and 5.3% zinc over 0.47 m

RUSK ZONE CORE PHOTOS



KL-21-558 87.94-88.96 m – 2.5 g/t gold, 160 g/t silver, 2.6% lead and 2.3% zinc over 1.02 m

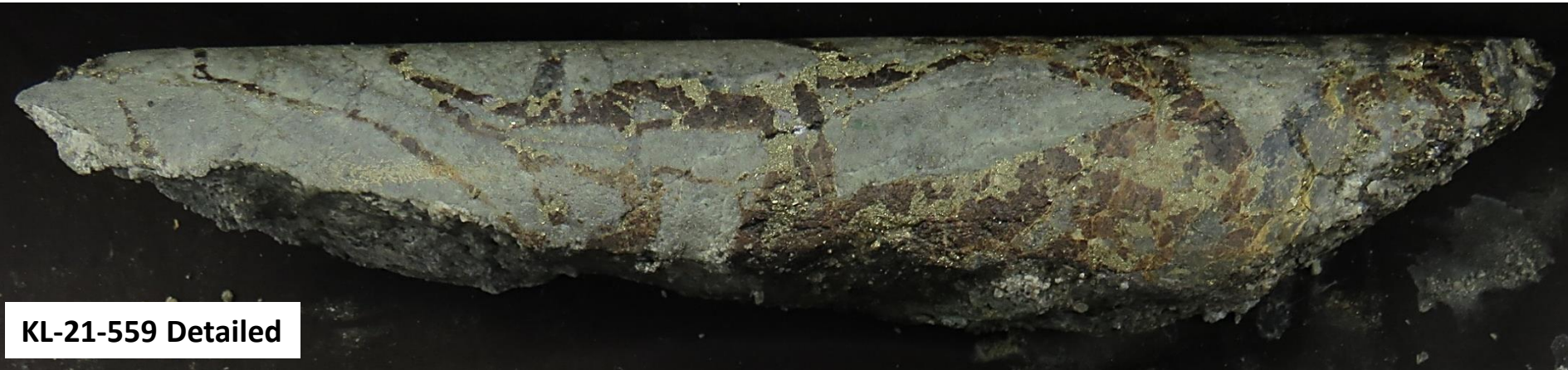


KL-21-558 Detailed

RUSK ZONE CORE PHOTOS



KL-21-559 148.25-153.57 m – 2.2 g/t gold, 69 g/t silver, 0.9% lead and 1.5% zinc over 5.32 m



RUSK ZONE CORE PHOTOS



Interval represents the diamond drill hole sample length. True widths are estimated to be approximately 80-90% of the interval. Please see Rockhaven Press Release dated March 16th, 2022 for further details.